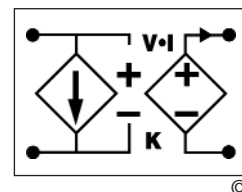


V•I Chip™ – VIC-in-a-Brick

Intermediate Bus Converters Quarter-Brick, 48 Vin Family

1.5 to 48 Vdc Bus Voltages; 100 A - 600 W Output

- Up to 600 W
- 94% Efficiency @ 3 Vdc
- 600 W @ 55°C, 400 LFM
- 125°C operating temperature
- 400 W/in³ power density
- 38-55 Vdc input range
- 100 V input surge for 100 ms
- SAC topology
- Low noise ZCS/ZVS architecture
- 3.5 MHz switching frequency
- Fast dynamic response
- 2,250 Vdc basic insulation
- Parallelable, with fault tolerance



Product Description

These "VIC-in-a-Brick" Intermediate Bus Converter (IBC) modules use Vicor's V•I Chip Bus Converter Modules (BCM) to achieve the highest performance for Intermediate Bus Architecture applications. Operating from a 38 – 55 Vdc input, ten different fixed ratio outputs are available from 3 to 48 Vdc. You can choose the intermediate bus voltage that is optimal for your system and load requirements.

These quarter-bricks are available with a single BCM, rated up to 300 W or 70 A, or with dual BCMs, capable of 600 W or 100 A. Dual output pins are used for output currents over 50 A.

Utilizing breakthrough Sine Amplitude Converter (SAC) technology, BCMs offer the highest efficiency, lowest noise, fastest transient response and highest power density. And full load power is available at 55°C with only 200 LFM of air for single BCM versions and 400 LFM for dual BCM versions, without a heat sink.

Absolute Maximum Ratings

Parameter	Values	Unit	Notes	
+In to -In voltage	Continuous	-1.0 to 60	Vdc	
	Surge	100	Vdc <100ms	
ON/OFF to -In voltage	-0.3 to 7.0	Vdc		
Isolation voltage			Basic insulation	
Input to output		2,250	Vdc	
	In/Out to heat sink	1,500	Vdc	
Operating temperature	-40 to 125	°C	Junction	
Pin soldering temperature				
	Wave	500 (260)	°F (°C)	<5 sec
	Hand	750 (390)	°F (°C)	<7 sec

Thermal Resistance and Capacity

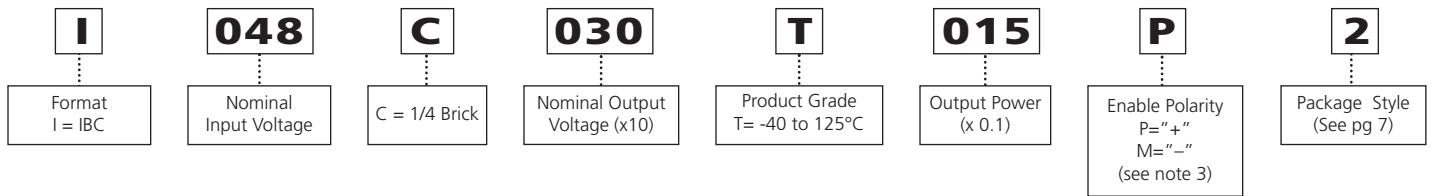
Parameter	Typ	Unit
VIC to ambient; 0 LFM (Single BCM)	13.3	°C/W
VIC to ambient; 0 LFM (Dual BCM)	11.7	°C/W
VIC to ambient; 200 LFM (Single BCM)	6.1	°C/W
VIC to ambient; 200 LFM (Dual BCM)	4.3	°C/W
Thermal capacity (Single BCM)	14.3	Ws/°C
Thermal capacity (Dual BCM)	22.8	Ws/°C

PRELIMINARY

General Specifications

V•I Chip Intermediate Bus Converter

Part Numbering



Product Matrix

Output Voltage (1)	Full Load Output (2)		Bus Converter Model Number (2)	Number of BCMs	K Factor (Transformation Ratio)	Full Load Efficiency (%)	R _{out} (mΩ)	Max Load Capacitance (4)
	Watts	Amps						
1.5	135	90	I048C015T014P2	1	1/32	92.0	1.0	100,000 μF
3.0	150	50 *	I048C030T015P1	1	1/16	94.5	2.0	31,000 μF
	210	70	I048C030T021P2	1		94.1	2.0	31,000 μF
	300	100 **	I048C030T030P2	2		94.3	1.0	62,000 μF
4.0	200	50	I048C040T020P1	1	1/12	93.7	3.0	17,000 μF
	400	100	I048C040T040P2	2		93.5	1.5	34,000 μF
6.0	240	40	I048C060T024P1	1	1/8	94.8	7.5	7,600 μF
	480	80	I048C060T048P2	2			3.8	15,200 μF
8.0	240	30	I048C080T024P1	1		95.8	8.3	4,300 μF
	480	60	I048C080T048P2	2		95.8	4.2	8,600 μF
9.6	240	25	I048C096T024P1	1	1/5	96.3	10.0	3,000 μF
	480	50	I048C096T048P1	2			5.1	6,000 μF
12	300	25	I048C120T030P1	1	1/4	96.0	14.0	1,000 μF
	600	50	I048C120T060P1	2		96.0	7.0	2,000 μF
16	240	15.0	I048C160T024P1	1	1/3	95.7	30.0	900 μF
	480	30.0	I048C160T048P1	2			15.0	1,800 μF
24	240	10.0	I048C240T024P1	1	1/2	95.0	60.0	470 μF
	480	20.0	I048C240T048P1	2			30.0	940 μF
32	300	9.4	I048C320T030P1	1	2/3	95.0	99.0	200 μF
	600	18.7	I048C320T060P1	2			48.0	400 μF
48	300	6.3	I048C480T030P1	1	1	96.3	190.0	100 μF
	600	12.5	I048C480T060P1	2			95.0	200 μF

* Full load capability is actually 70 A at 3 V. The maximum rating of the output pins is 50 A.

** Full load capability is actually 140 A at 3 V. The maximum rating of the output pins is 100 A.

Notes:

- (1) Output voltage at 48 Vdc input, no load and 25°C temperature.
- (2) Maximum power and current ratings should not be exceeded under normal operating conditions.
- (3) The ending "P" indicates positive enable logic (pull PC pin low to disable). Change to "M" to indicate negative logic (pull PC pin low to enable).
- (4) Exceeding this value can cause the unit not to turn on into load.

PRELIMINARY

Electrical Specifications

V•I Chip Intermediate Bus Converter

For comprehensive data on any of the configurations, please refer to the data sheet for the BCM with output voltage (K Factor) of the Intermediate Bus Converter of interest. Data sheets are available from our website at vicorpower.com.

Electrical characteristics apply over the full operating range of input voltage, output load (resistive) and case temperature, unless otherwise specified.

Input Specifications

Parameter	Min	Typ	Max	Unit	Notes
Operating input voltage	38	48	55	Vdc	
Input surge withstand			100	Vdc	<100 ms
Undervoltage					
Turn-on		36.1	38	Vdc	
Turn-off	32.6	33.8		Vdc	
Overvoltage					
Turn-off	55.0			Vdc	
Turn-on			59	Vdc	
Input reflected ripple current		3		% Iin	mA p-p with recommended external input capacitor
Input dV/dt			10	V/μs	
Turn-on time					
Power up		300		ms	
PC enable		50		μs	
No load power dissipation		2.5		W	per BCM
Recommended external input capacitance	10	50		μF	200 nH maximum source inductance

Output Specifications

Parameter	Min	Typ	Max	Unit	Notes
Output voltage accuracy		±2		%	48 V input; no load; 25°C
Peak repetitive output current			150	%	<1 ms; see Note 2 below
Current limit		125		%	See Note 1 below
Average short circuit current		200		mA	
Efficiency		96.0		%	48 Vin; full load; 25°C
Output OVP setpoint		120		%	
Line regulation					Fixed ratio; $V_{out} = V_{in} \cdot K$ (see product matrix)
Load regulation					$\Delta V_{out} = \Delta I_{out} \cdot R_{out}$ (see product matrix)
Temperature regulation		±0.05		% / °C	
Ripple and noise, p-p		100		mV	48 Vin; full load; 20 MHz bandwidth
Switching frequency		3.5		MHz	Fixed
Power sharing accuracy		±5	±10	%	10 to 100% load
Transient response					No load - full load step change, see Note 2 below
Voltage deviation		2		%	
Response time		200		ns	
Recovery time		1		μs	

Note

- (1) Current limit parameter does not apply for all models. Please see product matrix on Page 2 for exceptions.
- (2) For important information relative to applications where the unit is subjected to continuous dynamic loading, contact Vicor applications engineering at 800-927-9474.

PRELIMINARY

Electrical Specifications (continued)

V•I Chip Intermediate Bus Converter

Safety Specification

Parameter	Min	Typ	Max	Unit	Notes
Isolation voltage					Complies with basic insulation requirements
Input to output	2,250			Vdc	
In/Out to chassis	1,500			Vdc	
Isolation resistance	10			MΩ	Input to output
Agency approvals (pending)		cTÜVus CE Mark			UL/CSA 60950, EN 60950 Low voltage directive

Thermal Specifications

Parameter	Min	Typ	Max	Unit	Notes
Operating junction temperature	-40		+125	°C	
Storage temperature	-40		+150	°C	
Temperature limiting	125	130	135	°C	Junction temperature
Thermal capacity					
1 BCM		14.3		Ws/°C	
2 BCM		22.8		Ws/°C	
Pin soldering temperature					
Wave			500 (260)	°F (°C)	<5 sec
Hand			750 (390)	°F (°C)	<7 sec

General Specifications

Parameter	Min	Typ	Max	Unit	Notes
MTBF					
MIL-HDBK-217F		3,600		Khrs	25°C, GB; per BCM
Telcordia TR-NY-000332		4,200		Khrs	per BCM
Weight		3.7 (104)		oz (g)	
Dimensions		2.3 x 1.45 x 0.47		in	L x W x H
		58,4 x 36,8 x 11,9		mm	L x W x H

Control Specifications – Primary Control (PC Pin)

Parameter	Min	Typ	Max	Unit	Notes
Voltage (P version)	4.8	5.0	5.2	Vdc	
Disable voltage (P version)	2.4	2.5		Vdc	
Enable voltage (P version)		2.5	2.6	Vdc	
Enable voltage (M version)	1.2	1.5		Vdc	
Disable voltage (M version)		1.5	3.5	Vdc	
Current limit (P version)	2.4	2.5	2.9	mA	Source only

+IN / -IN DC Voltage Input Pins

The "VIC-in-a-Brick" Intermediate Bus Converter (IBC) input voltage range should not be exceeded. The V•I Chip BCM's internal under/over voltage lockout-function prevents operation outside of the normal input range. The BCM turns ON within an input voltage window bounded by the "Input under-voltage turn-on" and "Input over-voltage turn-off" levels, as specified. The IBC may be protected against accidental application of a reverse input voltage by the addition of a rectifier in series with the positive input, or a reverse rectifier in shunt with the positive input located on the load side of the input fuse.

Input Impedance

Vicor recommends a minimum of 10 μ F bypass capacitance be used on-board across the +IN and -IN pins. The type of capacitor used should have a low Q with some inherent ESR such as an electrolytic capacitor. If ceramic capacitance is required for space or MTBF purposes, it should be damped with approximately 0.3 Ω series resistance.

Anomalies in the response of the source will appear at the output of the IBC multiplied by its K factor. The DC resistance of the source should be kept as low as possible to minimize voltage deviations. This is especially important if the IBC is operated near low or high line as the over/under voltage detection circuitry of the BCM(s) could be activated.

ON/OFF – Primary Control

The Primary Control pin is a multifunction node that provides the following functions:

Enable/Disable

Standard "P" configuration — If the PC pin is left floating, the BCM output is enabled. Once this port is pulled lower than 2.4 Vdc with respect to -IN, the output is disabled. This action can be realized by employing a relay, opto-coupler or open collector transistor. This port should not be toggled at a rate higher than 1 Hz.

Optional "M" configuration — This is the reverse function as above: when the PC pin is left floating, the BCM output is disabled.

Primary Auxiliary Supply

The PC pin can source up to 2.4 mA at 5.0 Vdc. (P version only)

Alarm

The BCM contains watchdog circuitry that monitors output overload, input over voltage or under voltage, and internal junction temperatures. In response to an abnormal condition in any of the monitored parameters, the PC pin will toggle. (P version only)

+OUT / -OUT — DC Voltage Output Pins

The 0.062" diameter + and - output pins are rated for a maximum current of 50 A. Two sets of pins are provided for all units with a current rating over 50 A. These pins must be connected in parallel with minimal interconnect resistance. Within the specified operating range, the average output voltage is defined by the Level 1 DC behavioral model of the on board BCM(s) as defined in the appropriate BCM data sheet.

Output Impedance

The very low output impedance of the IBC, as shown in the Product Matrix table, reduces or eliminates the need for limited life aluminum electrolytic or tantalum capacitors at the input of the non-isolated point-of-load converters.

Load Capacitance

Total load capacitance at the output of the IBC should not exceed the specified maximum as shown in the Product Matrix table. Owing to the wide bandwidth and low output impedance of the BCM, low frequency bypass capacitance and significant energy storage may be more densely and efficiently provided by adding capacitance at the input of the IBC.

Bi-directional Operation

The BCM power train and control architecture allow bi-directional power transfer, including reverse power processing from the BCM output to its input. Reverse power transfer is enabled if the BCM input is within its operating range and the BCM is otherwise enabled. The BCM's ability to process power in reverse significantly improves the IBC transient response to an output load dump.

Thermal Management

Figures 2 to 5 provide the IBC's maximum ambient operating temperature vs. BCM power dissipation for a variety of airflows. In order to determine the maximum ambient environment for a given application, the following procedure should be used:

1. Determine the maximum load powered by the IBC.
2. Determine the power dissipated at this load by the on-board BCM(s).
 - a) If using a 1 BCM configuration, this dissipation is found in Fig. 6 on the appropriate BCM data sheet corresponding to the output voltage of the IBC.
 - b) If using a 2 BCM configuration, divide the maximum load by two. The power dissipated by each BCM is found in Fig. 6 on the appropriate BCM data sheet corresponding to the output voltage of the IBC. This number should then be multiplied by two to reflect the total dissipation.

3. Determine the airflow orientation from Fig. 1.
4. Using the chart corresponding to the appropriate airflow angle, find the curve corresponding to the airflow velocity and read the maximum ambient operating temperature of the IBC (y-axis) based on the total BCM power dissipation (x-axis).

For additional information on V•I Chip thermal design, please read the "Thermal Management" section of the BCM data sheet.

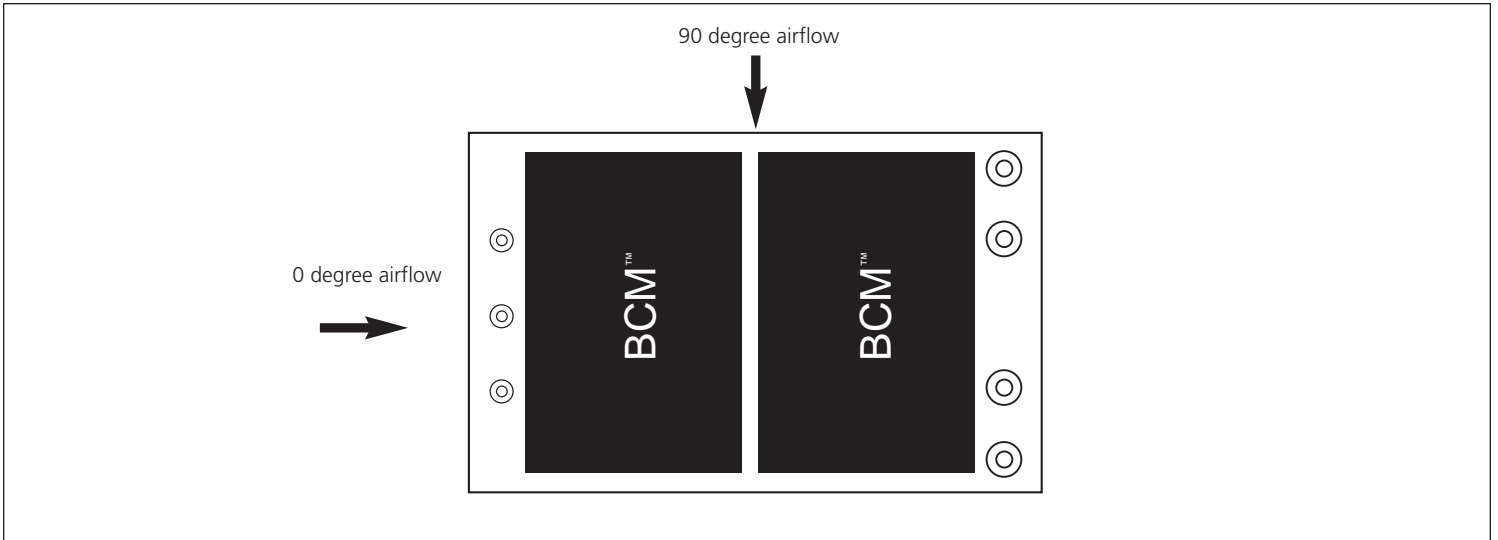


Figure 1— 0 and 90 degree airflow orientations for one or two BCM configurations

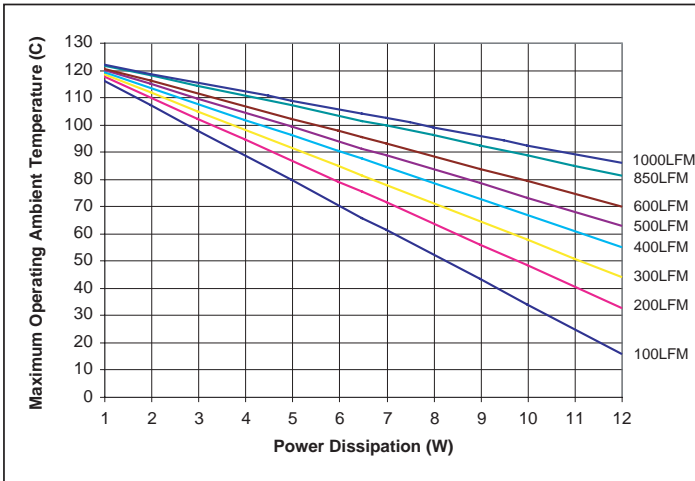


Figure 2— Maximum operating ambient temp. curves for 1 BCM with 0 degree airflow

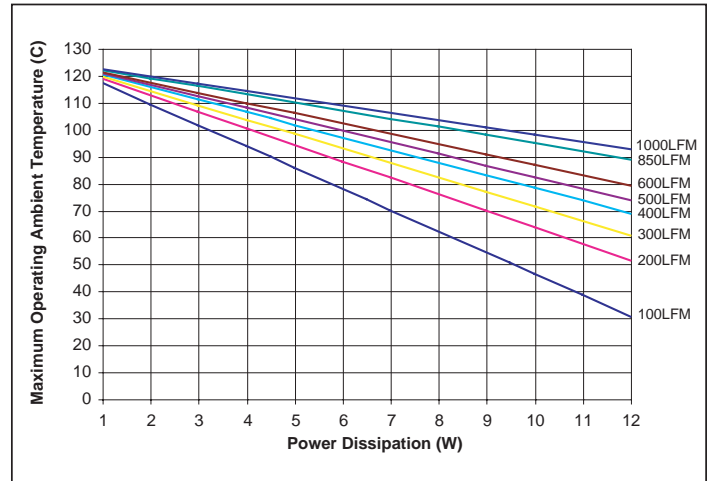


Figure 3— Maximum operating ambient temp. curves for 1 BCM with 90 degree airflow

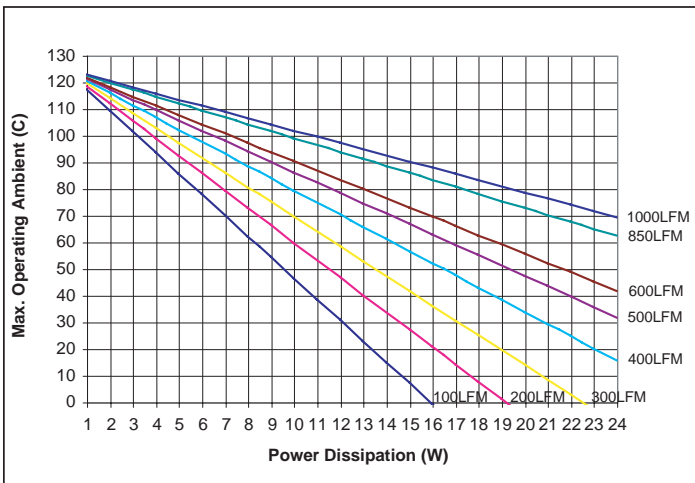


Figure 4— Maximum operating ambient temp. curves for 2 BCM with 0 degree airflow

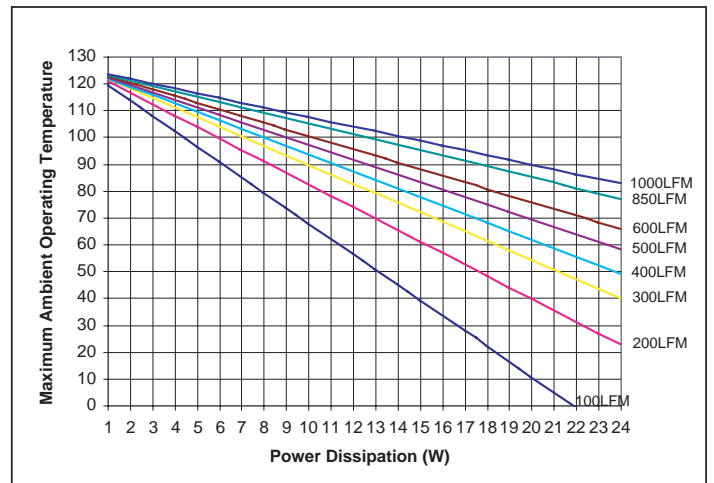
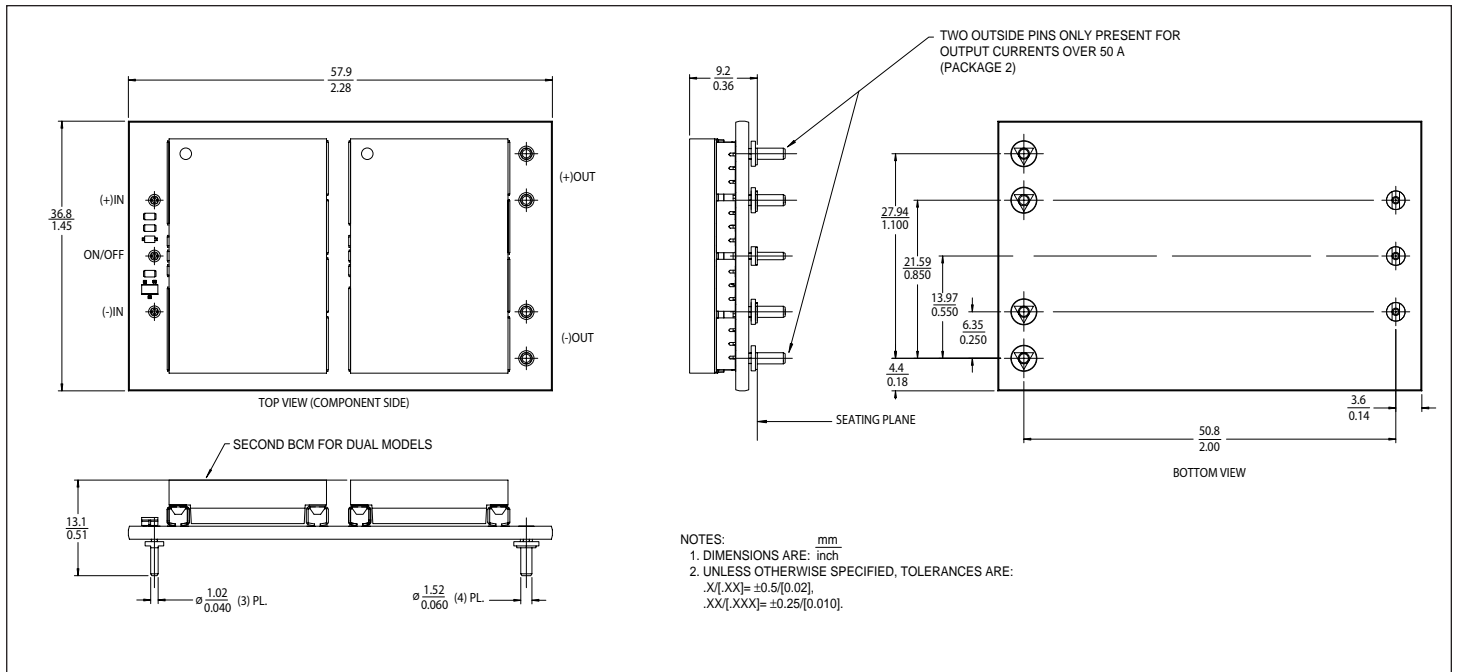


Figure 5— Maximum operating ambient temp. curves for 2 BCM with 90 degree airflow



Package Configurations

Package Style	Description
1	Single output pins
2	Dual output pins

Input Fuse Value

Bus Converter Model No.	Little Fuse Nano 451/453 Series	San-O SV 12/14 5/20 Series	Little Fuse 3AB Series
I048C015T014P1	6.3 A		
I048C030T015P1	6.3 A		
I048C030T021P2	8 A		
I048C030T030P2	12 A		
I048C040T020P1	8 A		
I048C040T040P2	15 A		
I048C060T024P1	12 A		
I048C060T048P2			25 A
I048C080T024P1	12 A		
I048C080T048P2			25 A
I048C096T024P1	10 A		
I048C096T048P1			20A
I048C120T030P1	12 A		
I048C120T060P1			25 A
I048C160T024P1	12 A		
I048C160T048P1			25 A
I048C240T024P1	12 A		
I048C240T048P1	25 A		
I048C480T030P1	12 A		
I048C480T060P1			25 A

Input Fusing

V•I Chips are not internally fused in order to provide flexibility in power system configuration. However, input line fusing of V•I Chips must always be incorporated within the power system. The input line fuse should be placed in series with +IN.

Warranty

Vicor products are guaranteed for two years from date of shipment against defects in material or workmanship when in normal use and service. This warranty does not extend to products subjected to misuse, accident, or improper application or maintenance. Vicor shall not be liable for collateral or consequential damage. This warranty is extended to the original purchaser only.

EXCEPT FOR THE FOREGOING EXPRESS WARRANTY, VICOR MAKES NO WARRANTY, EXPRESS OR IMPLIED, INCLUDING, BUT NOT LIMITED TO, THE WARRANTY OF MERCHANTABILITY OR FITNESS FOR A PARTICULAR PURPOSE.

Vicor will repair or replace defective products in accordance with its own best judgement. For service under this warranty, the buyer must contact Vicor to obtain a Return Material Authorization (RMA) number and shipping instructions. Products returned without prior authorization will be returned to the buyer. The buyer will pay all charges incurred in returning the product to the factory. Vicor will pay all reshipment charges if the product was defective within the terms of this warranty.

Information published by Vicor has been carefully checked and is believed to be accurate; however, no responsibility is assumed for inaccuracies. Vicor reserves the right to make changes to any products without further notice to improve reliability, function, or design. Vicor does not assume any liability arising out of the application or use of any product or circuit; neither does it convey any license under its patent rights nor the rights of others. Vicor general policy does not recommend the use of its components in life support applications wherein a failure or malfunction may directly threaten life or injury. Per Vicor Terms and Conditions of Sale, the user of Vicor components in life support applications assumes all risks of such use and indemnifies Vicor against all damages.

Vicor's comprehensive line of power solutions includes high density AC-DC and DC-DC modules and accessory components, fully configurable AC-DC and DC-DC power supplies, and complete custom power systems.

Information furnished by Vicor is believed to be accurate and reliable. However, no responsibility is assumed by Vicor for its use. Vicor components are not designed to be used in applications, such as life support systems, wherein a failure or malfunction could result in injury or death. All sales are subject to Vicor's Terms and Conditions of Sale, which are available upon request.

Specifications are subject to change without notice.

Intellectual Property Notice

Vicor and its subsidiaries own Intellectual Property (including issued U.S. and Foreign Patents and pending patent applications) relating to the products described in this data sheet. Interested parties should contact Vicor's Intellectual Property Department.

Vicor Corporation

25 Frontage Road
Andover, MA, USA 01810
Tel: 800-735-6200
Fax: 978-475-6715

email

Vicor Express: vicorexp@vicr.com
Technical Support: apps@vicr.com